

SPIRITUALITY
IN
ARCHITECTURAL EDUCATION

*Twelve Years of the Walton Critic Program at
The Catholic University of America*

Julio Bermudez

With Contributions by architects Craig W. Hartman, Juhani Pallasmaa, Alberto Campo Baeza, Claudio Silvestrin, Eliana Bórmida, Michael J. Crosbie, Prem Chandavarkar, Rick Joy, Susan Jones, and Daniel Libeskind.



The Catholic University
of America Press
Washington, D.C.

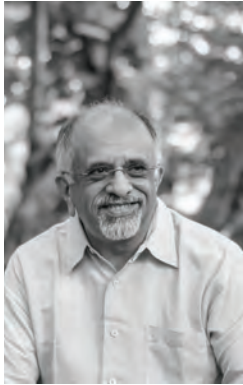
CONTRIBUTORS



Eliana Bórmida is principal of Bórmida & Yanzón Arquitectos, an international, award winning office operating from Mendoza, Argentina. Their portfolio contains remarkable projects related to nature, wine, lodging, agro-industrial architecture and more. Balancing contemporary demands and consciousness with the values of local tradition, their buildings are beautiful, simple, tectonic, and sophisticated. It is an experiential architecture that defines a spatial narrative full of sensations and emotion that kindly invites our actions and always grounds us to the local nature, culture, and history. Bórmida & Yanzón's work has been covered in the international press and published extensively. Bórmida was a professor of architecture history and urbanism at the Universidad de Mendoza for 30 years where she founded and directed the Institute of Architectural and Urban Culture. She was awarded the Stella dell'Ordine della Solidarietà Italiana bestowed by the Presidency of Italy in 2007, named "Outstanding Woman" by the Mendoza Federation of Business Leaders in 2012, and Illustrious Citizen of the City of Mendoza in 2014.



Alberto Campo Baeza is a Spanish architect internationally known for his luminous, simple yet nuanced, and always provocative architecture, the result of a long, continuous and disciplined investigation of the miracle of light and space. By professing an axiology of 'more with less,' Campo Baeza is able to focus on the essence of architectural ideas, experience, and program. His work has received extensive, worldwide recognition. In 2014, he was elected Full Member to the Royal Academy of Fine Arts of San Fernando of Spain. In 2015, he was awarded the BigMat in Berlin, the International Prize of Spanish Architecture, and the 1st Prize Ex Aequo to build the new Louvre. Most recently, he received the Gold Medal for Spanish Architecture (2019) and the National Prize for Architecture in Spain (2020). His built work, drawings, and writings have been published in 5 languages. He teaches at ETSA-UPM, in Madrid, since 1976 and has lectured at many American and other foreign universities.



Prem Chandavarkar is the managing partner of CnT Architects, a 60-person award-winning and widely published architectural practice based in Bangalore, India. CnT's seeks to construct a collaborative practice where design excellence is pursued in an organizational form that does not center on a few specific personalities. CnT's work is known for mediating design spectacularity and human habitation by "an aesthetics of absorption," that is, by making architectures that absorb and accrue meaning rather than flaunt it. Chandavarkar is a former Executive Director of Srishti School of Art Design & Technology in Bangalore, and has been a guest lecturer at architecture colleges in India, the United States, New Zealand, and Switzerland. Besides design practice at CnT, he writes and lectures on a wide variety of subjects covering architecture, urbanism, art, spirituality, cultural studies, politics, and education.



Michael J. Crosbie has made significant contributions in the fields of architectural journalism, research, teaching, and practice. He has served as an editor at *Architecture*, *The AIA Journal*, *Progressive Architecture*, *ArchitectureWeek.com*, and since 2001 as editor-in-chief of *Faith & Form*, a quarterly journal on interfaith religious art and architecture. He is the author of more than 20 books on architecture and has edited and contributed to approximately 20 others. Dr. Crosbie is Professor of Architecture at the University of Hartford and has lectured and served as a visiting critic at many architecture schools in North America and abroad. He has been one of the leaders of the Architecture, Culture, and Spirituality Forum (ACSF) since 2013. Professor Crosbie is a recipient of the Edward S. Frey Memorial Award in recognition of his contributions made to religion, art, and architecture, bestowed by the Interfaith Forum on Religion, Art, and Architecture.



Craig W. Hartman, FAIA, is SOM's Senior Consulting Design Partner, serving over 30 years as the firm's partner for its West Coast practice. His US and international work ranges from entire urban districts to singular works of architecture and interior space. His projects have been widely published and examples of the work are held as part of SFMOMA's permanent collection. Hartman's architecture is characterized for environmental sustainability, humanism, and its nuanced consideration of the relationships between material, structure, form and natural light. Among his well-known buildings are the U.S. Embassy in Beijing, the United States Courthouse in Los Angeles, the Library of Virginia in Richmond, San Francisco's International Airport Terminal at SFO, and the Cathedral of Christ the Light in Oakland. At the Cathedral Dedication, Hartman received the Vatican's Knighthood (Sylvestrine Order). Hartman's work has been recognized with over 240 awards for design and innovation, including 10 National AIA Honor Awards for Architecture, Interior, and Urban Design. Hartman has taught, lectured, and juried work at multiple architecture programs in the



Susan Jones is founder and principal of atelierjones, an architecture, urban and ecodesign firm. Started in 2003, the office brings design, research, and community engagement to generate projects of reclamation: of forgotten urban sites and buildings, or of waste/scrap materials to create renewable and beautiful architecture. The firm designs new ways of living and working in the city: from homes to urban housing, spiritual spaces, the rehabilitation of commercial structures, and the preservation of historic structures. atelierjones' work has received numerous international, national, and local design awards. Her book, *“Mass Timber | Design and Research”* was published in 2018 by ORO Editions. Susan Jones has been a visiting design professor and critic at numerous universities and is Affiliate Associate Professor of Architecture at the University of Washington. A native of the Pacific Northwest, she became a Fellow of the AIA in 2010, and has been working for architects since she was sixteen.



Rick Joy is founder and principal of Studio Rick Joy, a 32-person architecture and planning firm established in 1993 in Tucson, Arizona. SRJ is internationally recognized for its contemporary, lifestyle centered, contextually responsive, and beautiful approach to architecture. SRJ has participated in multiple exhibitions and has been featured in over 150 publications worldwide. Joy has lectured extensively throughout the United States and around the globe. He is considered a contributor to the global discourse on modern architecture. Joy has received many national recognitions including the 2002 American Academy of Arts and Letters Award in Architecture, the prestigious National Design Award from the Smithsonian Institute/Cooper-Hewitt Museum in 2004, multiple Record House Awards (1997, 2001, 2005, 2009, 2010), and the 2013 Jeff Harnar Award for Contemporary Architecture. Rick Joy periodically serves as a visiting professor at the Harvard Graduate School of Design, Rice University, University of Arizona, and M.I.T.



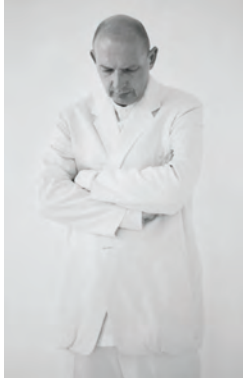
Polish-American architect, **Daniel Libeskind** is an international figure in architecture and urban design. Informed by a deep commitment to music, philosophy, and literature, Mr. Libeskind aims to create architecture that is resonant, original, and sustainable. Libeskind established his architectural studio in Berlin, Germany, in 1989 after winning the competition to build the Jewish Museum in Berlin. In February 2003, Studio Libeskind moved its headquarters from Berlin to New York City to oversee the master planning for the World Trade Center redevelopment, which is being realized in Lower Manhattan today. Daniel Libeskind's practice is involved in designing and realizing a diverse array of urban, cultural and commercial projects around the globe. The Studio has completed buildings that range from museums and concert halls to convention centers, university buildings, hotels, shopping centers and residential towers. As Principal Design Architect for Studio Libeskind, Mr. Libeskind speaks widely on the art of architecture in universities and professional summits. His architecture and ideas have been the subject of many articles and exhibitions, influencing



Finnish architect **Juhani Pallasmaa** is one of the most lucid architectural theoreticians and educators in the world today. His many books, writings, exhibitions, and buildings are internationally renowned. For example, his *“The Eyes of the Skin”* has become a classic book of architectural theory all over the world and his exhibitions of Finnish architecture have been displayed in more than 30 countries. Former professor and dean of architecture at the Helsinki University of Technology and former Director of the Museum of Finnish Architecture, Pallasmaa travels around the world to lecture and lead workshops that prompt architects, scientists, philosophers, and others to consider the most important topics of today. For many years, he served as a jury member of the Pritzker Prize, the most prestigious architectural award in the world.



Antoine Predock received the 2006 American Institute of Architects (AIA) Gold Medal — the highest honor conferred by the AIA on an architect whose significant body of work has had a lasting influence on the theory and practice of architecture. He is the principal of Antoine Predock Architect PC, based in Albuquerque, N.M. Predock’s U.S. projects include the La Luz community in Albuquerque, the Nelson Fine Arts Center at Arizona State University, the Tang Teaching Museum and Art Gallery at Skidmore College, and the San Diego Padres’ Petco Park, whose design reinvents the concept of a ballpark as a garden rather than solely a sports complex. His international work includes the National Palace Museum Southern Branch in Southern Taiwan and the Canadian Museum for Human Rights in Winnipeg, Manitoba, Canada. He has lectured all over the world and taught at many American universities, including the University of New Mexico, University of Oklahoma, SCI-Arc, CalPoly Pomona, Clemson University, Harvard University, and Arizona State University.



Architect **Claudio Silvestrin** is based in London and Milan and the author of an internationally recognized oeuvre that covers not only architecture but also a wide range of design scales and interests. His works are distinguished by being austere but not extreme, contemporary yet timeless, calming but not ascetic, strong but not intimidating, elegant but not ostentatious, simple but not soulless. His aim is to raise human awareness of an evolution which is not merely technological and material, but which fundamentally encompasses emotion and spirit, man and nature, and has beauty as its compass. He pursues this conviction with a thought process based on depth, integrity, clarity of mind, inventiveness, and concern for details. Claudio Silvestrin's thoughts on today's challenges as well as his work have been featured in four books, many professional magazines and journals, exhibitions, and many media outlets.



Thomas Walton's 25-year career in teaching at The Catholic University of America's School of Architecture and Planning focused on design and buildings as expressions of social and cultural values. These essential themes emerge in his research and writing on such topics as the great 1920s skyscraper race in New York City, the history of the planning and development of Washington, DC, and his volume on corporate architecture in the late Twentieth century. Following these commitments, in 2003 he joined the U.S. General Services Administration in its Design Excellence Program, an initiative that has reinvigorated the importance of federal building as a symbol of our open government and democratic values. He envisioned and funded the Walton Distinguished Critic in Design and Catholic Stewardship at CUA in 2008 which he continuously engaged with and supported until his unexpected passing in May 2020. Walton had received his M.Arch (1976) and Ph.D. (1980) from The Catholic University of America, lectured at organizations such as the American Institute of Architects and the Smithsonian Institution, and served as a consultant to the National Endowment for the Arts.

EDITOR



Professor **Julio Bermudez** has directed the Sacred Space and Cultural Studies graduate program at the Catholic University of America School of Architecture and Planning since 2010. Dr. Bermudez's interests are focused on the relationship between architecture, culture, and spirituality through the lens of phenomenology and neuroscience. He has widely lectured, led symposia, and published in these areas, including *"Transcending Architecture. Contemporary Views on Sacred Space"* (CUA Press 2015) and *"Architecture, Culture and Spirituality"* (Routledge 2015). His current research uses neuroscience to study contemplative and sacred spaces. Bermudez has received several national and international recognitions, including the 1998 AIA Education Honors Award, the 2005 Arturo Montagu Creative Career Prize (bestowed by Latin American SiGraDi), the 2010 Sasada Award for significant record in scholarship and service (conferred by CAADRIA, Asia), and the 2021 ACSA Distinguished Professor Award. He is the president of the Architecture, Culture, and Spirituality Forum, a 650-member international organization that he co-founded in 2007 (<http://www.acsforum.org/>).